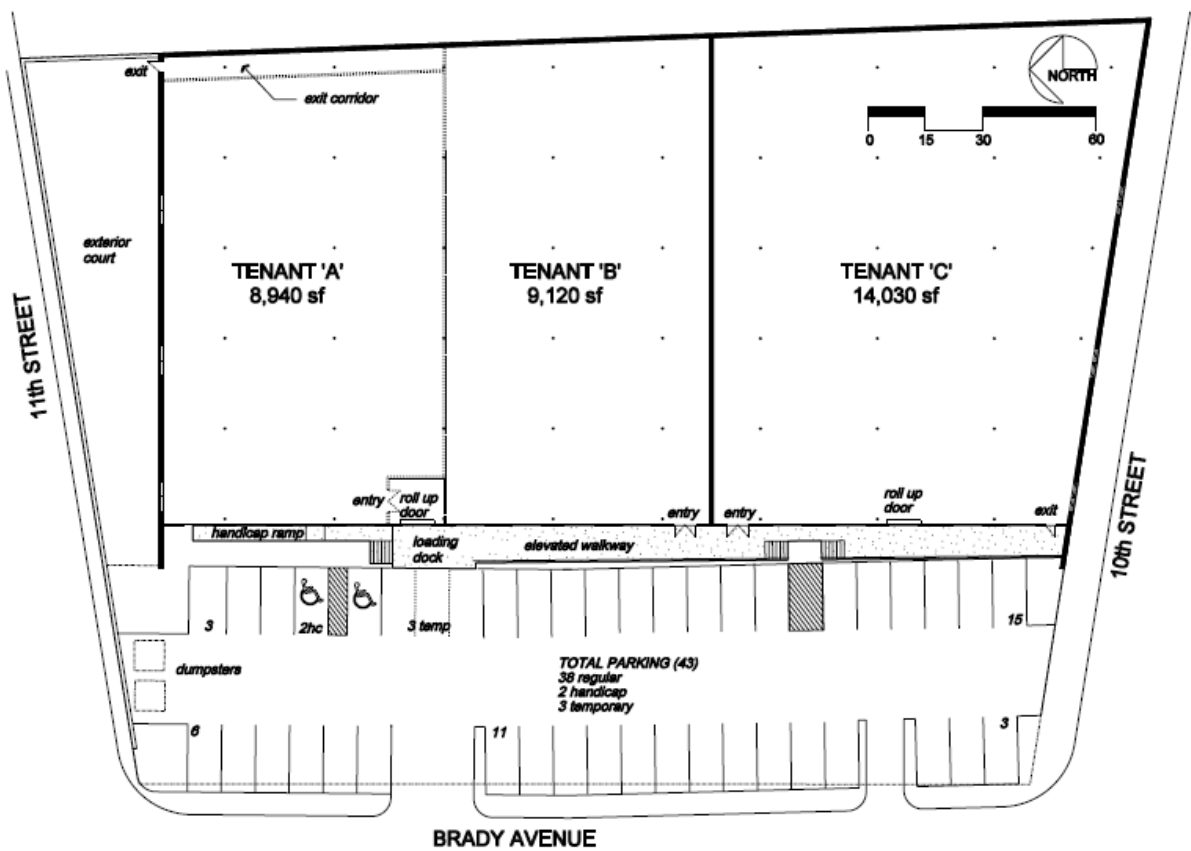




WEAVER & WOODBERY REAL ESTATE

999 Brady Avenue

Purchased in May 2007, this current storage facility will be transformed to house showroom-retail tenants, which are prevalent in the Midtown West submarket. Located at the intersection of 10th Street and Brady Avenue, the proposed improvements include a new façade, increased parking, and interior skylights. For more leasing info please contact Ward Entrekin at (770) 913-3927 or wentrekin@ackermanco.net

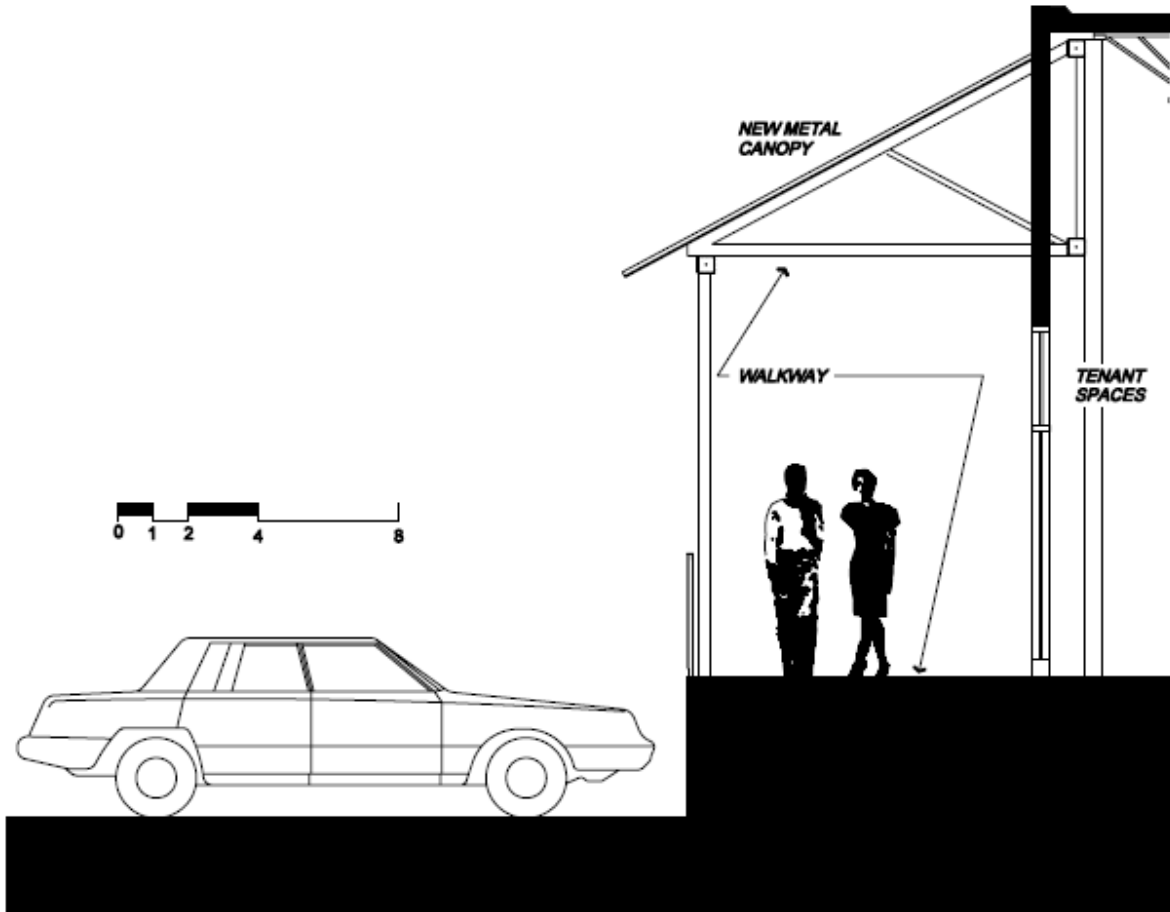


Site Plan

1" = 30'-0"



999 Brady Avenue



Walkway Section

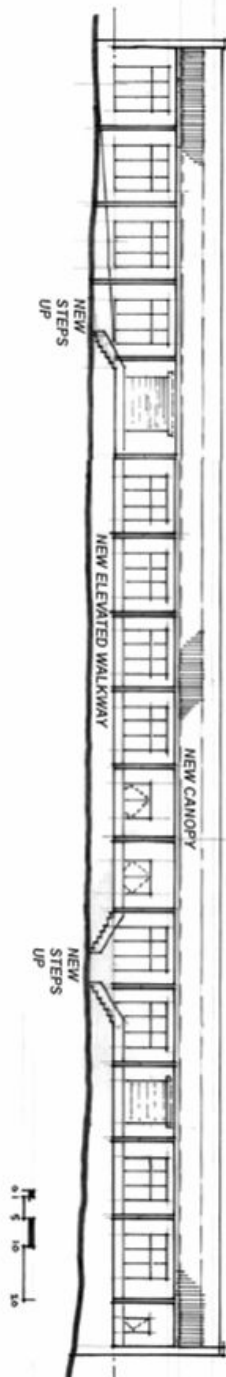
$1/8'' = 1'-0''$



999 Brady Avenue

999 Brady Avenue
Studios
July 2, 2007

New Elevation
1/8" = 1'-0"



square feet studio

